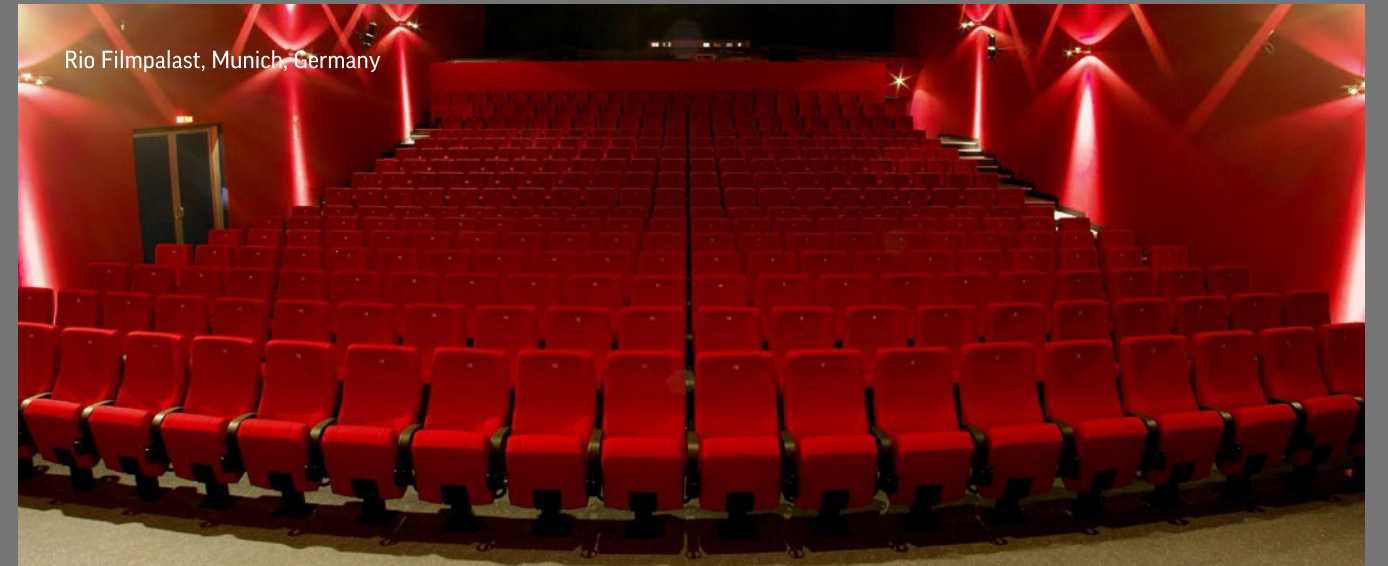


BJERRING

HUMPHREY



Rio Filmpalast, Munich, Germany



COMFORT IN EXPERIENCING EMOTIONS

A good film can transfer viewers to a completely different reality... provided they feel comfortable and are able to focus entirely on the things that happen on the silver screen. Therefore, it is crucial to furnish cinema halls with comfortable and durable armchairs with the right accessories.

The very sight of a wide armchair covered with soft upholstery makes a pleasurable first impression on cinema-goers. Sitting on it gives them most possible comfort all the way until the last minute of the film. The armchair backrest ensures ergonomic support for the users back and allows them to make small natural body movements. Other important features of a cinema armchair are a seat of the right hardness and accessories, such as a cup holder, within the users reach.

Thanks to our 20 years of experience in equipping cinemas, we know how to create an ideal cinema seat. We offer different armchair options that allow for choosing products and details adjusted to our clients individual preferences.

We take responsibility for the entire equipment process from defining our clients needs to carrying out quick and efficient assembly that hinders the cinemas functioning to the least extent possible.



Humphrey

Fully upholstered armrests



Humphrey

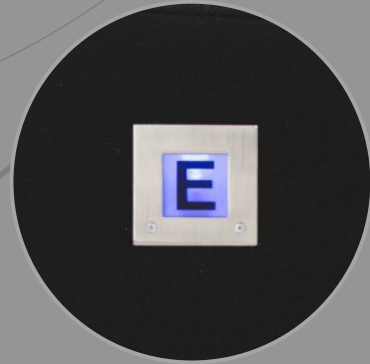
Integrated armrests



ADDITIONAL EQUIPMENT



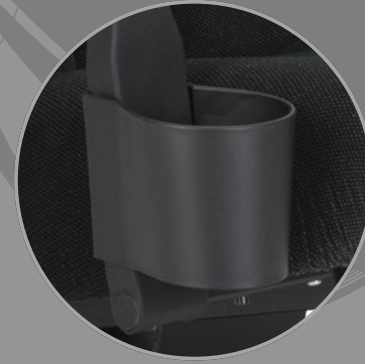
Round plate with a row number



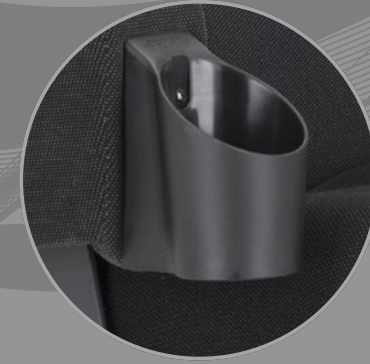
Illuminated row number
Type B LED (square), 12 V



Illuminated row number
Type A Slimlight (round), 48 V



Cup holder GE (1 l)



Cup holder FS (1 or 1.5 l)



Wooden armrest pad



Replaceable seat number,
height 15 mm



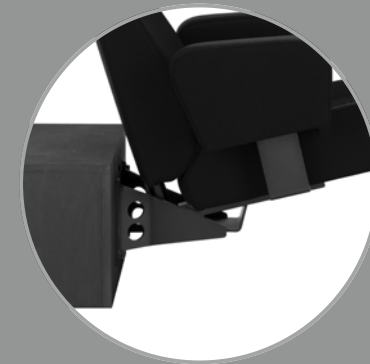
Replaceable embroidered seat number,
height 20 mm



Seat number engraved on the armrest,
height 16 mm



Removable place for a wheelchair



Step riser console



Decorative element



Isolated headrest



Swing function



Comfortable seat 600 mm



Desktop on a column assembled
between seats



Desktop assembled
at the armchair back



Desktop assembled
at the armrest



DYNAMIC

COMFORT SYSTEMS



SwingMode
DYNAMIC BACK SYSTEM



Glide-Tec
DYNAMIC SEAT SYSTEM



eMotion
DYNAMIC DRIVE SYSTEM



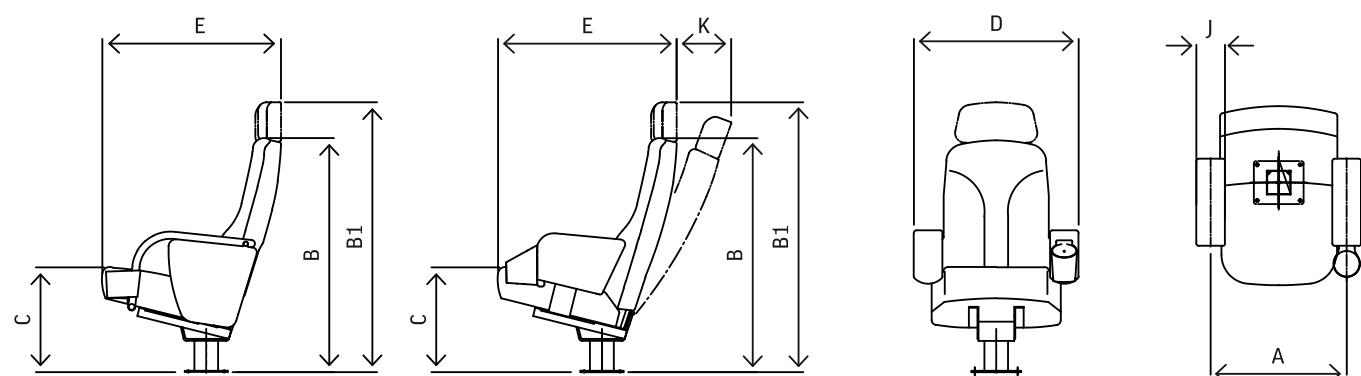
ProSonic
DYNAMIC SOUND SYSTEM

Our goal is to provide viewers with the best comfort possible, so we have developed an innovative range of dynamic seating systems based on our long-term experience in ergonomic seating development and protected by international patents.

To relax completely, the user needs the right body support, the optimal back position and a seat and footrest that ensure maximum freedom of movement. The dynamic sound system lets viewers experience

movie scenes packed with special effects better than ever before. Dynamic Comfort Systems provide the viewer with maximum comfort and great pleasure, even at cinemas with limited space.

DIMENSIONS



Dimensions in mm	A Distance between axes	B Total height	B1 Total height, including headrest	C Seat height	D Outer dimensions	E Total depth	J Armrest width	K Armchair tilt
Humphrey with a fixed seat; integrated armrests	550	970	1130	440	630	700750	80	
Humphrey with a fixed seat and high backrest; upholstered armrests	570	970	1130	440	690	700750	120	
Humphrey with a fixed seat and tiltable backrest; upholstered armrests	570	970	1130	440	690	700750	120	180210

SEALS OF APPROVAL AND CERTIFICATES

FLAME RESISTANCE CLASSIFICATION, UPHOLSTERY

Classification according to the requirements stated in the standards given below.

German standards:

- DIN EN 1021 Parts 1+2 (Ignition source: smouldering cigarette and match flame equivalent)

Austrian standards:

- Austrian standard 3825 B1 (hardly combustible)
- Austrian standard 3800 Q1 (low smoke)

QUALITY MANAGEMENT

Certification according to the requirements stated in the standards given below.

- DIN EN ISO 9001
- DIN EN ISO 14001



GS CERTIFICATION

GS-certified in accordance with the requirements stated in the standard DIN EN 12727, issued by TÜV SÜD.



ASSEMBLY OPTIONS

Floor type:



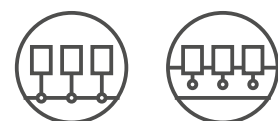
Flat Sloped Stairs

Armchair arrangement:

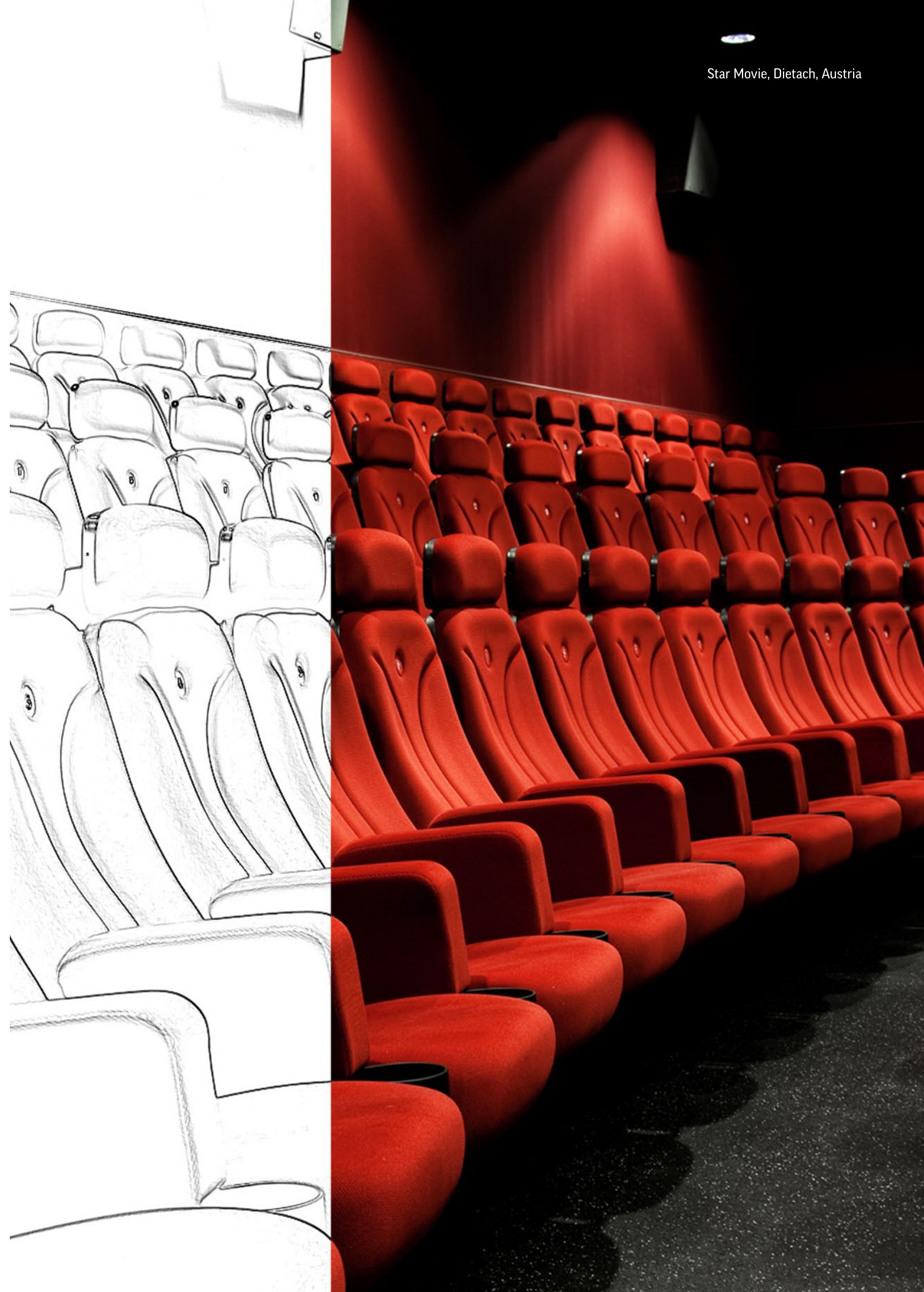


Straight Curved

Armchair assembly type:



TYPE C to the floor TYPE A to the step riser



BJERRING

Tykhøjvej 20 - Hal 5
7323 Give
+45 42705206
salg@bjerring-sales.dk

www.bjerring-sales.dk